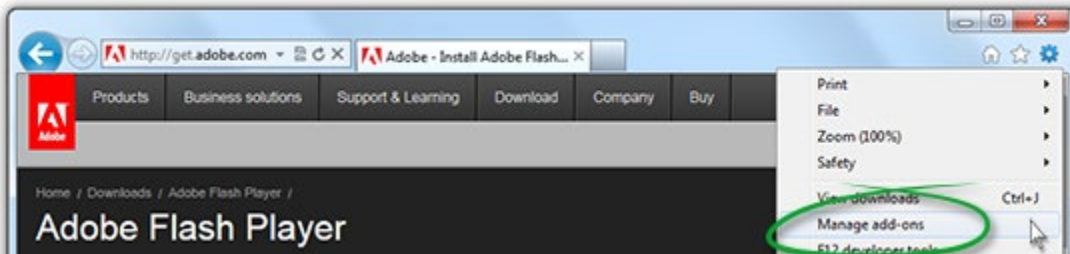


1. Click the **Tools icon** in the upper-right corner of Internet Explorer. (The icon looks like a gear.)



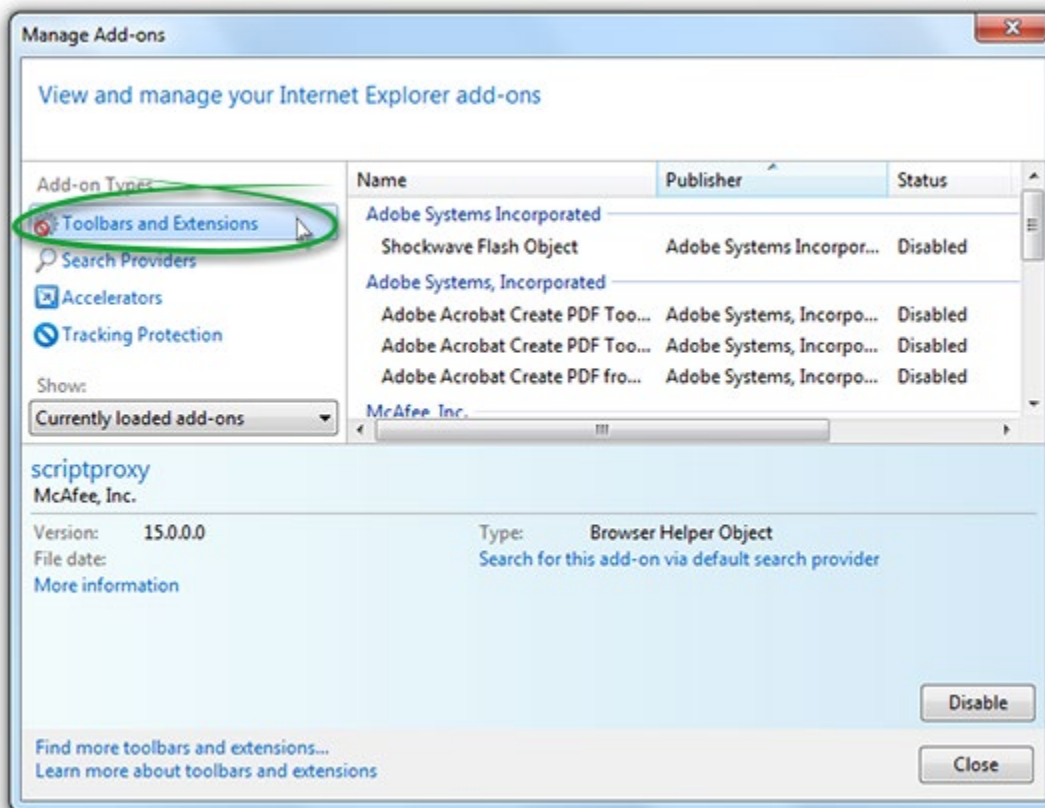
*The Tools icon is in the upper-right corner.*

2. In the pop-up menu that appears, click **Manage Add-ons**.



*Choose Manage Add-ons from Tools menu.*

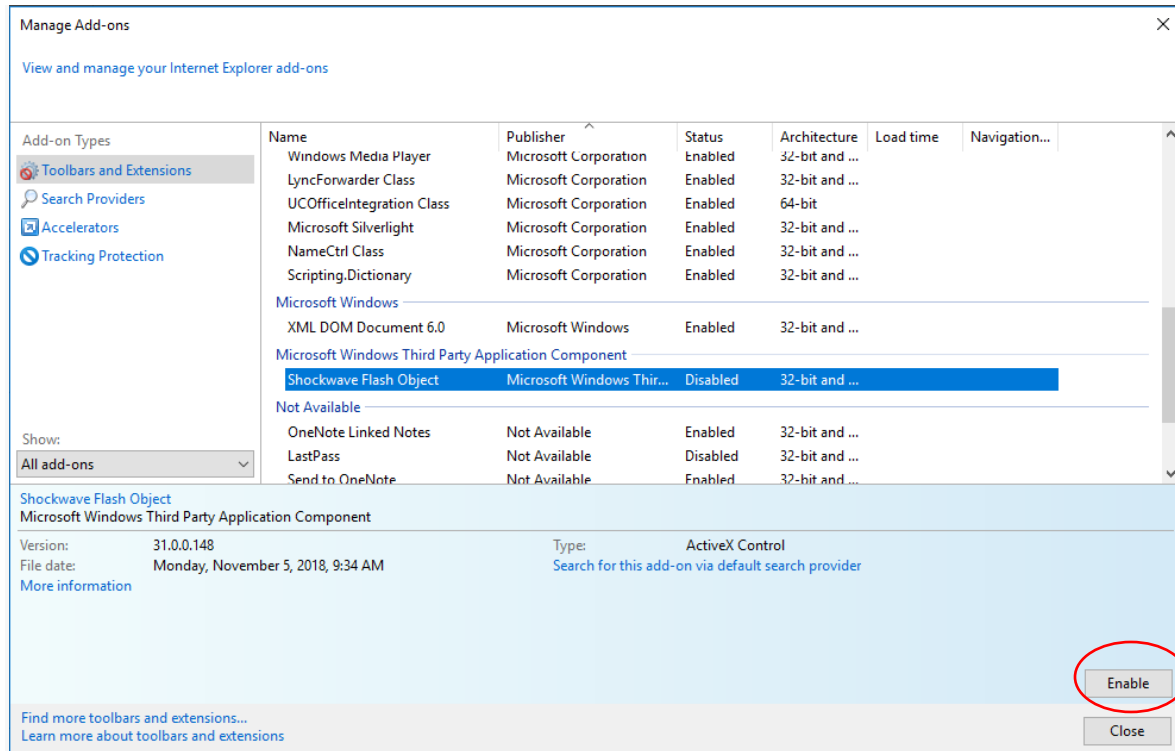
3. In the dialog box that appears, select **Toolbars and Extensions**.



*Select Tools and Extensions as the Add-on Types from Manage Add-ons dialog box.*

4. In the list of **All Add-ons**, look for Microsoft Windows Third Party Application Component: “Shockwave Flash Object” (another name for Flash Player).

In the Status column, check to see whether Shockwave Flash Object is Disabled. If it is disabled, click the row for Shockwave Flash Object to highlight it.



*Shockwave Flash Object as the Add-on Type. The Flash is in Disabled status.*

5. In the lower-right corner of the Manage Add-ons dialog box, **click Enable**.

*Click Enable in the lower-right corner.*